

Charmate
Great taste. *Good times!*

360mm Diameter Packable Firepit & BBQ

Model No. CM201T - ASSEMBLY INSTRUCTIONS



BBQ



**Low Smoke
Firepit**



**Low Smoke
Cooktop**

SAFETY WARNING

- Outdoor use only
- Surfaces will become extremely hot during use, do not touch
- Adult supervision is required at all times while children are in proximity during use
- Do not leave unattended during use
- Ensure that the flame is extinguished, and the unit has sufficiently cooled before packing away or leaving unattended

This product will dis-colour through normal use. This is a natural oxidation process of the stainless steel when exposed to high heat and is considered normal for this grade of material. There may also be minor distortion of shape due to stress relieving when high heat is applied. If distortion does occur, it will not affect the function of the product and or assembly/disassembly and is considered normal.

Charmate is a registered trademark of: Sitro Group Australia Pty Ltd - www.charmate.com.au & Aber Living, N.Z. - www.charmate.co.nz

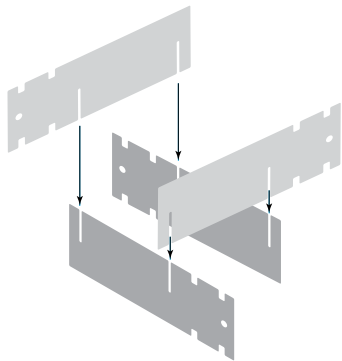
Important: Retain these instructions for future use.

ASSEMBLING THE STAND

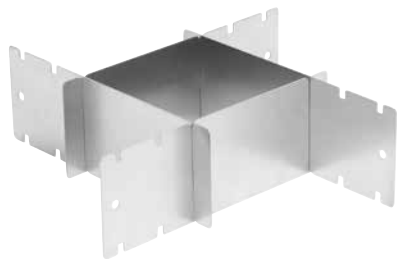
1



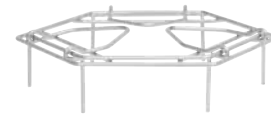
2



3



ASSEMBLING THE UNIT

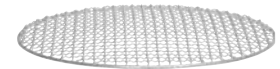


TRIVET
Use as a Cooktop



COLLAR
Use as a Firepit

OR



GRILL
Use as a BBQ



Ash Pan

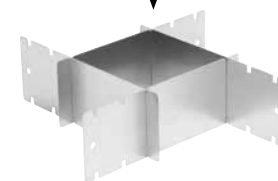


Top Half

(lip locator)

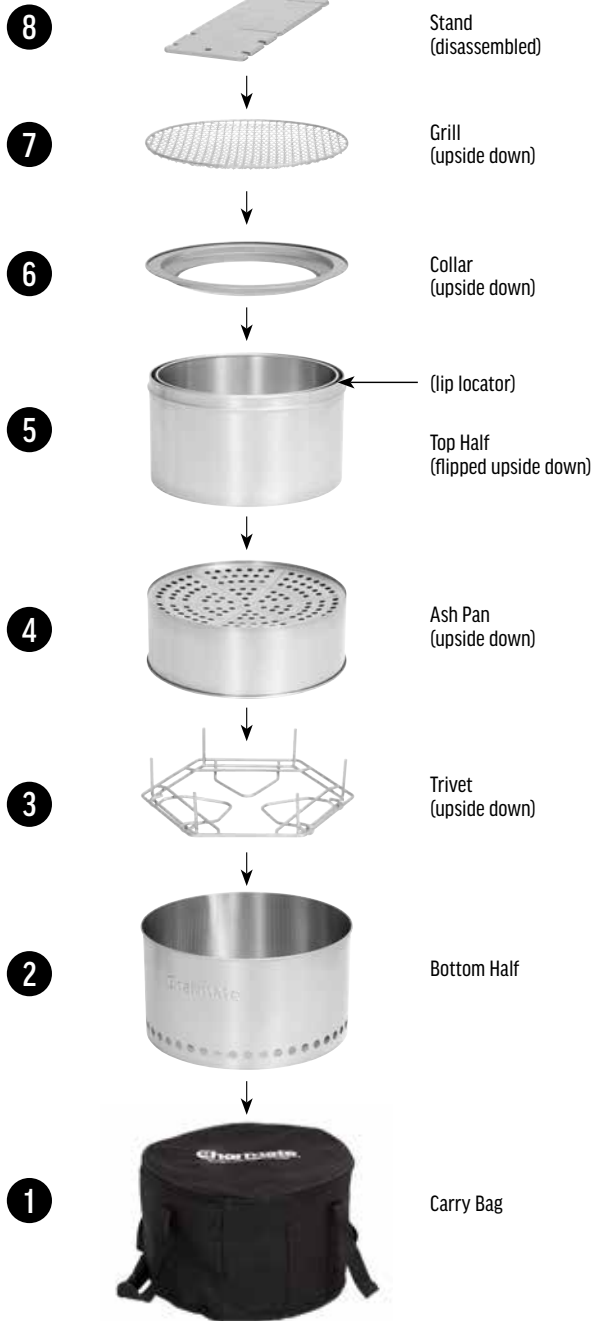


Bottom Half



Stand
(assembled)

EASY TO PACK UP



STEP 1

Start by packing the Bottom Half of the unit into the carry bag, then follow the numbered sequence.