

**Charmate**  
Great taste. *Good times!*

# 500mm Diameter Packable Firepit

Model No. CM201U - ASSEMBLY INSTRUCTIONS



## SAFETY WARNING

- Outdoor use only
- Surfaces will become extremely hot during use, do not touch
- Adult supervision is required at all times while children are in proximity during use
- Do not leave unattended during use
- Ensure that the flame is extinguished, and the unit has sufficiently cooled before packing away or leaving unattended

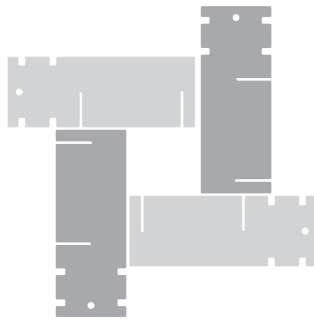
This product will dis-colour through normal use. This is a natural oxidation process of the stainless steel when exposed to high heat and is considered normal for this grade of material. There may also be minor distortion of shape due to stress relieving when high heat is applied. If distortion does occur, it will not affect the function of the product and or assembly/disassembly and is considered normal.

**Charmate** is a registered trademark of: Sitro Group Australia Pty Ltd - [www.charmate.com.au](http://www.charmate.com.au) & Aber Living, N.Z - [www.charmate.co.nz](http://www.charmate.co.nz)

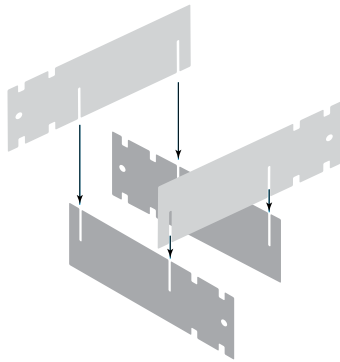
**Important: Retain these instructions for future use.**

## ASSEMBLING THE STAND

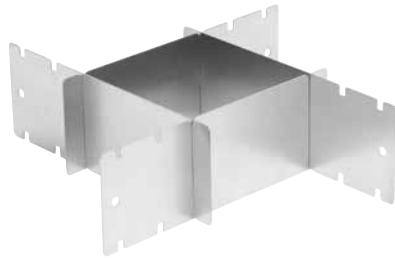
1



2



3



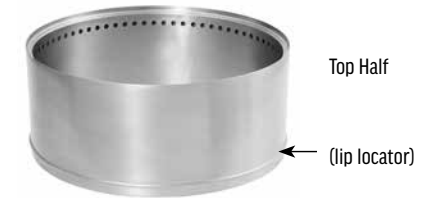
## ASSEMBLING THE UNIT



**COLLAR**  
Use as a Firepit



Ash Pan

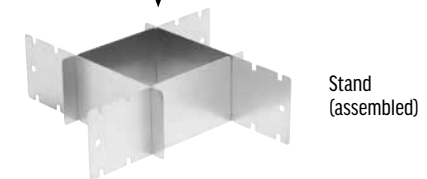


Top Half

(lip locator)

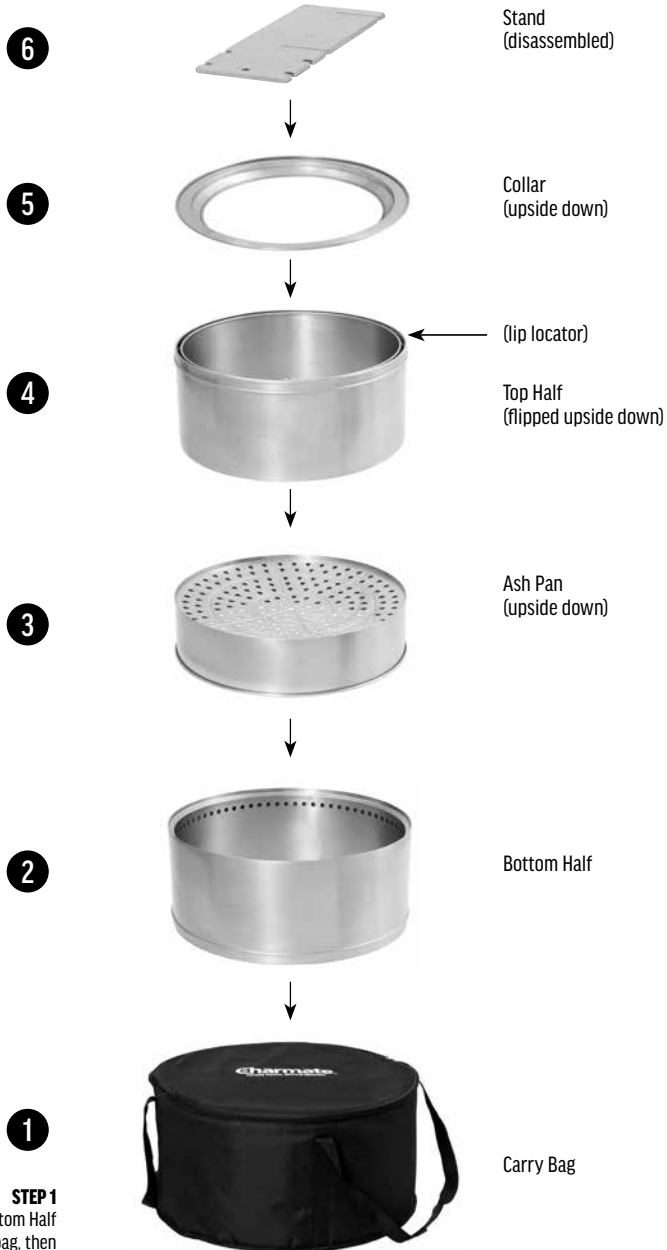


Bottom Half



Stand  
(assembled)

# EASY TO PACK UP



## STEP 1

Start by packing the Bottom Half of the unit into the carry bag, then follow the numbered sequence.