



IMPORTANT

Read these instructions for use carefully. Familiarise yourself with the appliance before connecting it to its gas container. Keep these instructions for future reference.

ONLY USE IN WELL-VENTILATED AREAS.

CARBON MONOXIDE HAZARD!

Using this appliance in an enclosed space may cause death. Do Not use in caravans, tents, marine craft, cars, mobile homes or similar locations.

- Do not modify this appliance.
- Check that seals between the appliance and the gas container are in place and in good condition before connecting the gas container.
- Do not use the appliance if it has damaged or worn seals.
- Do not use this appliance if it is leaking, damaged or does not operate properly.
- This appliance must only be serviced by an authorised person.
- The openings at the base of the burner provide air for combustion, they should never be obstructed. If the flame becomes significantly orange check these openings for a blockage.
- If the appliance cannot be adjusted to perform correctly it should not be used until serviced or repaired.
- To check that the gas container is filled, when shaken a sloshing sound will be heard.

CAUTION: accessible parts may be very hot. Keep young children away.

USE OUTDOORS ONLY.

BUTANE PRODUCT

This appliance shall only be used with an 75% butane /25% propane mix gas canister certified to EN417 or equivalent.

IT MAY BE HAZARDOUS TO ATTEMPT TO FIT OTHER TYPES OF GAS CONTAINERS.

Only change the gas canister in a well ventilated location, preferably outside, away from people and any source of ignition, such as naked flames, pilot flames, and electric heaters/equipment.

If there is a leak on your appliance (smell of gas) and you cannot stop the gas flow, remove the appliance to a well-ventilated location away from any ignition source. Check for leaks using soapy water. Do not try to detect leaks using a flame.

For any queries or assistance call



Customer Service
(Australia Only)

1300 174 876

Hours of operation:
Monday to Friday 8am - 5pm EST

Do not return to place of purchase.

Keep your purchase receipt, this will be required to make any claims under the 1 year warranty.

Gasmate

Gasmate

TURBO BUTANE STOVE & POT SET

Model No. GM030-040

- Aluminium pot features quick-boil technology that boils .5 litre of water in 130 seconds*
- Compact 500g carry weight
- Robust stainless steel burner
- Piezo ignition
- Precise flame adjustment
- Components pack into pot - carry bag included
- 4.2 MJ/h output
- 4,000 BTU output
- Stabilising feet
- Optional trivet for larger pans
- Use with screw type canister 75% Butane / 25% Propane gas (not included)
- Gas certified to Australian and New Zealand Standards



*Ambient temperature may affect boil time
Gas canister not included

! OUTDOOR USE ONLY

Important: Retain these instructions for future use.

Gasmate® is a registered trademark of
Sitro Group Australia Pty Ltd www.gasmate.com.au
Aber, N.Z. www.gasmate.co.nz

04613 05/23

GENERAL INFORMATION

INSTRUCTIONS FOR USE

1. Remove appliance from the carton and remove any transit protection material.
 - a. The appliance area must be kept clear and free of combustible materials, gasoline and other flammable vapours and liquids.
 - b. Gas orifices and burner must be kept clear of dirt and cobwebs. Flow of combustion and ventilation air through the perforated portions of the appliance must not be obstructed.
 - c. Any cleaning agent used on the appliance should be of a non-combustible and non-corrosive nature.

2. Proper clearance from combustible materials must be maintained at all times.

Minimum Clearance from Combustibles: Sides 100mm Top 300mm

Combustible materials are considered to be wood, compressed paper, plant fibres, plastic, plexiglas or other materials capable of being ignited and burned. Such materials shall be considered combustible even though flame proofed, fire-retardant treated or plastered. Additional clearance may be required for glass, painted surfaces and other materials which may be damaged by radiant or convection heat.

3. Attach the appliance to the specified butane canister and ensure that the control valve is fully closed and the sealing gasket is firmly sealed against neck of connector. In case you have a different canister, please consult your supplier for the required adaptors. Control valve is suitable for a butane canister with a 7/16" - 28NS male thread.
4. Appliance should be operated only on a hard, flat, level surface.

LIGHTING & REGULATING

Open control valve approximately half a turn in the "+" anti-clockwise direction and press the piezo igniter button, the burner should ignite. If burner fails to ignite, turn valve off in the "-" clockwise direction and try again. Regulate the flame to the height desired.



WARNING

Be very careful when turning the burner down. Visually check to ensure the flame does not go out.

REPLACING JETS

If the jet should become blocked or need replacement, unscrew the burner and remove the metal body. The jet can now be removed. To clear blocked jets wash in petrol. Do not use wires or prickers. Re-assemble in reverse order.

ANNUAL MAINTENANCE

Clean the body of your appliance using a cotton cloth soaked in soapy hot water. Never use abrasive or flammable cleaning products. Use a soft brush to clean the burner.

STORAGE

When the appliance is not used it must be stored in a suitable area to protect it from any risk of deterioration. Keep it in a well ventilated area and out of reach of children.

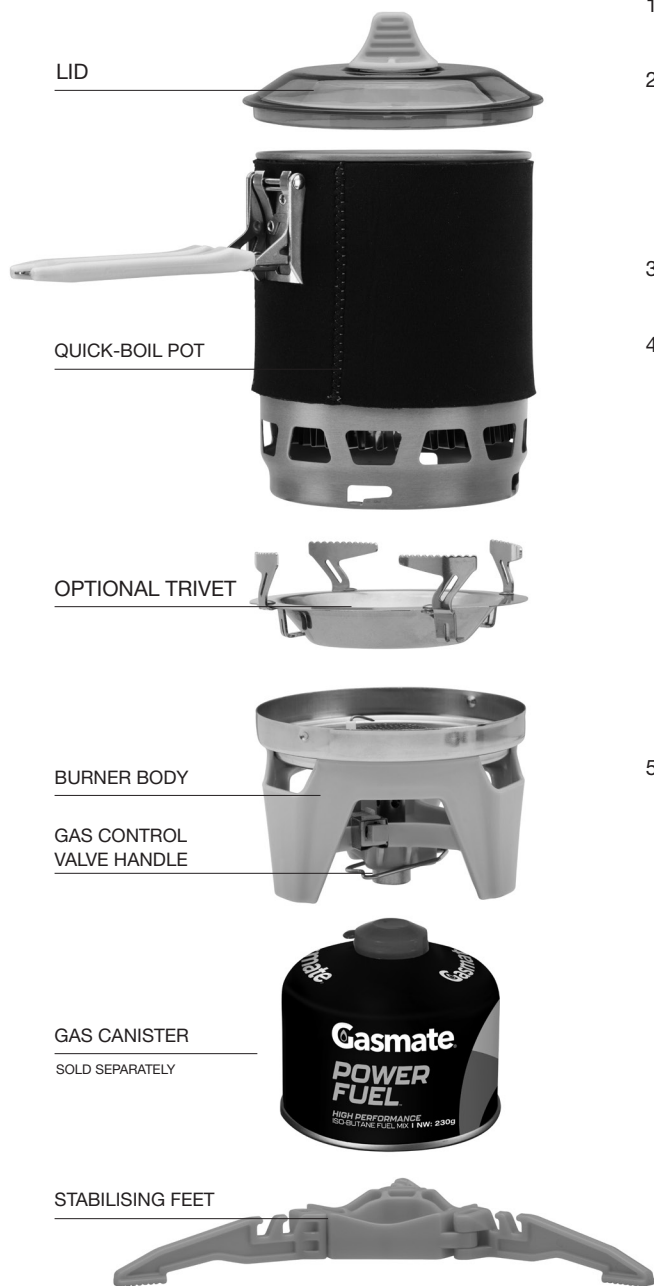
HANDY HINTS

- a. Inspect the "O" Ring regularly and replace if worn or damaged.
- b. Never connect or disconnect the appliance near an open flame.
- c. Check for gas leaks with SOAPY WATER. DO NOT USE A FLAME.
- d. Ensure that the area in which the appliance is to be used is well ventilated and DO NOT use as a space heater in tent, caravan, etc.
- e. Ensure the appliance is completely extinguished before disconnecting from the canister.
- f. DO NOT place the appliance closer than 30cm from ceiling or flammable material.
- g. Avoid moving the appliance during use as this can cause large flames.
- h. Allow the appliance to cool down after use before touching the burner or folding the trivets.



GAS CONTROL VALVE MARKINGS

PARTS LIST



LID

QUICK-BOIL POT

OPTIONAL TRIVET

BURNER BODY

GAS CONTROL VALVE HANDLE

GAS CANISTER

SOLD SEPARATELY

STABILISING FEET

HOW TO USE

1. Unfold the stabilising feet until they lock fully into place. Attach the feet to the base of the gas canister.
2. Unfold the gas control valve handle from the burner body base. Ensure the control valve is fully closed (clockwise). Attach the burner body to the canister by rotating clockwise fully (some gas may leak when attaching, which is normal. Avoid inhaling the fumes).
3. Attach the quick-boil pot to the burner body and rotate clockwise until it locks into place.
4. If using an alternative pot or pan, use the supplied trivet. Do not use the trivet with the quick-boil pot.



5. To attach the trivet, rotate the arms outwards to reveal the slots on the underside. Place the slots onto the burner body and rotate anti-clockwise until it locks into place.



GAS CONSUMPTION

g/h	MJ/h	BTU	Injector
85.3 g/h	4.2 MJ/h	4,000 BTU	0.19mm

SAFE APPLIANCE LOCATIONS

This appliance shall only be used in an above ground open-air situation with natural ventilation, without stagnant areas, where gas leakage and products of combustion are rapidly dispersed by wind and natural convection.

Any enclosure in which the appliance is used shall comply with the following:

An enclosure with walls on all sides, but at least one permanent opening at ground level and no overhead cover (see Example 1).

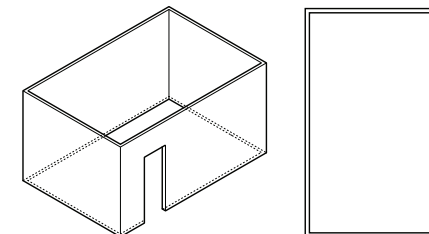
Within a partial enclosure that includes an overhead cover and no more than two walls (see Example 2 & 3).

Within a partial enclosure that includes an overhead cover and more than two walls, the following will apply: at least 25% of the total wall area is completely open, and at least 30% of the remaining wall area is open and unrestricted (see Example 4 & 5).

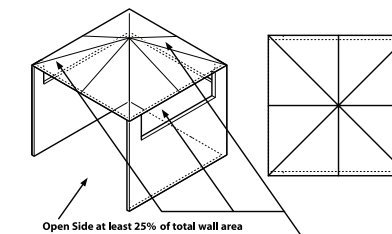
In the case of balconies, at least 20% of the total wall area shall be and remain open and unrestricted.

DIAGRAMMATIC REPRESENTATIONS OF OUTDOOR AREAS

The following figures are diagrammatic representations of outdoor areas. Rectangular areas have been used in these figures – the same principles apply to any other shaped area.

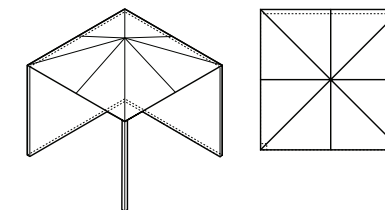


Outdoor Area - Example 1

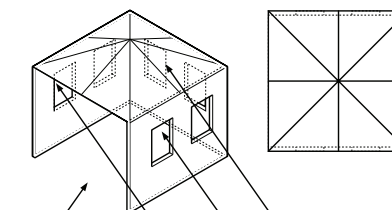


Open Side at least 25% of total wall area
30% or more in total of the remaining wall area is open and unrestricted

Outdoor Area - Example 4

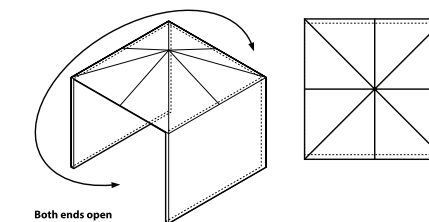


Outdoor Area - Example 2



Open Side at least 25% of total wall area
30% or more in total of the remaining wall area is open and unrestricted

Outdoor Area - Example 5



Both ends open

Outdoor Area - Example 3