

Gasmate®

CLASSIC 2 BURNER STOVE

MODEL NO. CS1095

USER MANUAL



IMPORTANT: KEEP THESE INSTRUCTIONS FOR FUTURE REFERENCE.

For the most up-to-date version of this manual, please visit the product page at gasmate.com.au or gasmate.co.nz as updates and improvements may be made periodically.

Gasmate® is a registered trademark of Sitro Group Australia Pty Ltd www.gasmate.com.au
Aber Holdings Limited, N.Z. www.gasmate.co.nz

INTRODUCTION

Thank you for purchasing our Gasmate Classic 2 Burner Stove. We recommend that you take the time to check and see that the packaged contents are all accounted for. It would also be a good opportunity to visually check for obvious damage or problems with the appliance while unboxing.

This User Manual provides informative information on safety, functions, maintenance and other key points to allow for safe and trouble-free use.

We take utmost care to ensure that all our appliances pass our rigorous and extensive quality assurance process before delivery.

However, in the unlikely event that you should experience a problem, require assistance, or have a potential warranty issue, we are here to help. Please do not hesitate to contact our Customer Service Department using the contact details at the back of this User Manual.

Note, due to continual product development, product images may differ slightly to what is shown.

GENERAL SAFETY WARNINGS

IMPORTANT: Read these instructions for use carefully. Familiarise yourself with the appliance before connecting to the LP Gas Cylinder. Keep these instructions for future reference.

Before attempting to ignite and/or use your new appliance, the following basic safety precautions should be taken into consideration to eliminate the possible risk of Fire and Personal injury.

This User Manual also highlights guidelines, limitations, and potential hazards associated with the appliance before, during and after use.

The User Manual is designed with safety in mind, for yourself, others, and to ensure a long trouble-free service life.

If for any reason, you do not fully understand the contents of this User Manual or require clarification regarding the features or safety, please contact our Customer Service Department for assistance.

The appliance is not intended for use by persons (including children) with reduced physical, sensory or mental capabilities, or lack of experience and knowledge, unless they have been given supervision or instructions concerning the use of the appliance by a person responsible for their safety.

SPECIFIC SAFETY WARNINGS



WARNING!

LP GAS - UNIVERSAL LIQUEFIED PETROLEUM GAS

THIS APPLIANCE SHALL ONLY BE USED WITH A PROPANE GAS CYLINDER CERTIFIED TO AS2469. DO NOT CONNECT TO A CAMPING CYLINDER LARGER THAN 4KG.

IT MAY BE HAZARDOUS TO ATTEMPT TO FIT OTHER TYPES OF GAS CONTAINERS.

GAS CYLINDERS SHOULD BE STORED OUTDOORS, IN A WELL-VENTILATED AREA AND OUT OF REACH OF CHILDREN. ANY INDOOR STORAGE SHALL COMPLY WITH AS/NZS 1596.



WARNING!

ONLY USE IN WELL-VENTILATED AREAS.

CARBON MONOXIDE HAZARD - USING THIS APPLIANCE IN AN ENCLOSED SPACE MAY CAUSE DEATH.

DO NOT USE IN CARAVANS, TENTS, MARINE CRAFT, CARS, MOBILE HOMES OR SIMILAR LOCATIONS.



WARNING!

THE OPENINGS AT THE BASE OF THE APPLIANCE PROVIDE THE REQUIRED AIR FLOW FOR OPTIMUM COMBUSTION AND SHOULD NEVER BE OBSTRUCTED. IF THE FLAME BECOMES SIGNIFICANTLY ORANGE IN COLOUR, INSPECT THESE OPENINGS FOR ANY BLOCKAGE OR OBSTRUCTION.

IF THIS APPLIANCE CANNOT BE ADJUSTED TO PERFORM CORRECTLY, IT SHOULD NOT BE USED UNTIL SERVICED OR REPAIRED.



WARNING!

NOT FOR COMMERCIAL USE.

DO NOT USE MULTIPLE APPLIANCES TO HEAT A SINGLE COOKING DEVICE.

DO NOT MOVE THE APPLIANCE DURING OPERATION.

DO NOT USE AS A SPACE HEATER OR FOR ANY PURPOSE OTHER THAN COOKING.

IMPORTANT: AVOID BOIL-OVER AND SPILLAGE DURING OPERATION.

DO NOT USE THIS APPLIANCE IN AREAS WHERE THERE IS A RISK OF EXPLOSION OR FIRE FROM COMBUSTIBLE MATERIALS. THE RADIANT HEAT POSSIBLY CAUSED WHEN USING THIS APPLIANCE MAY IGNITE COMBUSTIBLE MATERIALS SUCH AS, WOOD, PLASTIC, FABRIC OR FURNITURE. AS WELL AS FLAMMABLE LIQUIDS SUCH AS, PAINT, VARNISH, PETROL, FLAMMABLE GASES AND DUST OF AN EXPLOSIVE NATURE.

ENSURE ADEQUATE CLEARANCE IS ALWAYS MAINTAINED. THE RECOMMENDED MINIMUM CLEARANCE FROM COMBUSTIBLE MATERIALS SHOULD BE 600MM FROM THE TOP, SIDE AND REAR.

THIS APPLIANCE MUST BE USED ON A HORIZONTAL, STABLE AND NON-FLAMMABLE SURFACE.



WARNING!

USE OUTDOORS ONLY. SEE OPERATING INSTRUCTIONS.

CAUTION: ACCESSIBLE PARTS MAY BE VERY HOT. KEEP YOUNG CHILDREN AWAY.

SPECIFIC SAFETY WARNINGS (continued)

- Do not modify or disassemble the appliance.
- Do not use the appliance if it has damaged or worn seals.
- Do not use the appliance if it is leaking gas, damaged or does not operate properly.
- Do not use cleaning products that are combustible, abrasive or corrosive.
- Do not place articles on or against the appliance.
- Do not leave the appliance unattended while ignited.
- Do not permanently install or connect the appliance to any other reticulated gas supply.
- Always familiarise yourself with the appliance before connecting the gas cylinder.
- Always leak test the appliance and gas cylinder connection with a soapy water solution before each use. Do not try to detect leaks using a flame.
- Always check that the O-Ring seal between the appliance and gas cylinder is in place and in good condition before connection.
- Always ensure that the appliance is turned 'OFF' after each use and the gas cylinder is removed.
- Always ensure that there is adequate ventilation under the appliance while in use.
- Always check that the jet and burner orifices are clear of foreign matter so as not to obstruct air and gas flow.
- Always check that the burner is extinguished before disconnecting the gas cylinder.
- Always change the gas cylinder in a well-ventilated location, preferably outside, away from people and any source of ignition, such as naked flames, pilot flames and electric heaters/equipment.
- Always lift the appliance by the handle and ensure the gas is turned off before moving.
- If the flame height appears excessively high, low or soot is being deposited, stop using the appliance and have it serviced.
- If there is a leak on this appliance (smell of gas), immediately attempt to turn off the cylinder valve. Remove the appliance to a well-ventilated location, away from any ignition source. Check for leaks using soapy water. Do not try to detect leaking gas with a flame.
- The appliance must only be serviced or repaired by an Authorised Gasmate Service Agent.
- To check that the gas cylinder contains gas, gently shake it to hear a liquid sloshing sound.
- ONLY use the hose assembly as supplied with the appliance for connection to the cylinder – DO NOT USE ADAPTORS.
- Maximum hose length is 1000 mm.
- After use, ensure the LP Gas Cylinder Valve is turned 'OFF' first, wait for the burner flame to extinguish, then turn the appliance control valve(s) 'OFF'. This process will remove pressure and residual gas from the hose before disconnection.
- Avoid twisting or kinking the flexible hose.

KEY FEATURES

- Fine burner adjustment controls.
- Durable powder coated finish.
- Removable cookware trivet for easy cleaning
- Compact and lightweight.
- Wind protection shields on three sides.
- Powerful 11.0 MJ/h burners, 22 MJ/h total – designed to deliver even heat.
- Connects directly to a 3/8"–19 BSPP-LH camping cylinder.
- LP GAS – Universal Liquefied Petroleum Gas.
- Certification – Australian and New Zealand Gas Standards.
- Weight – 3.9kg (appliance and packaging).

UNPACKING

Carefully remove the appliance and any transit protection from the packaging. Visually inspect the appliance for any obvious damage, and ensure that all components are included as per the heading 'Understanding the Appliance'.

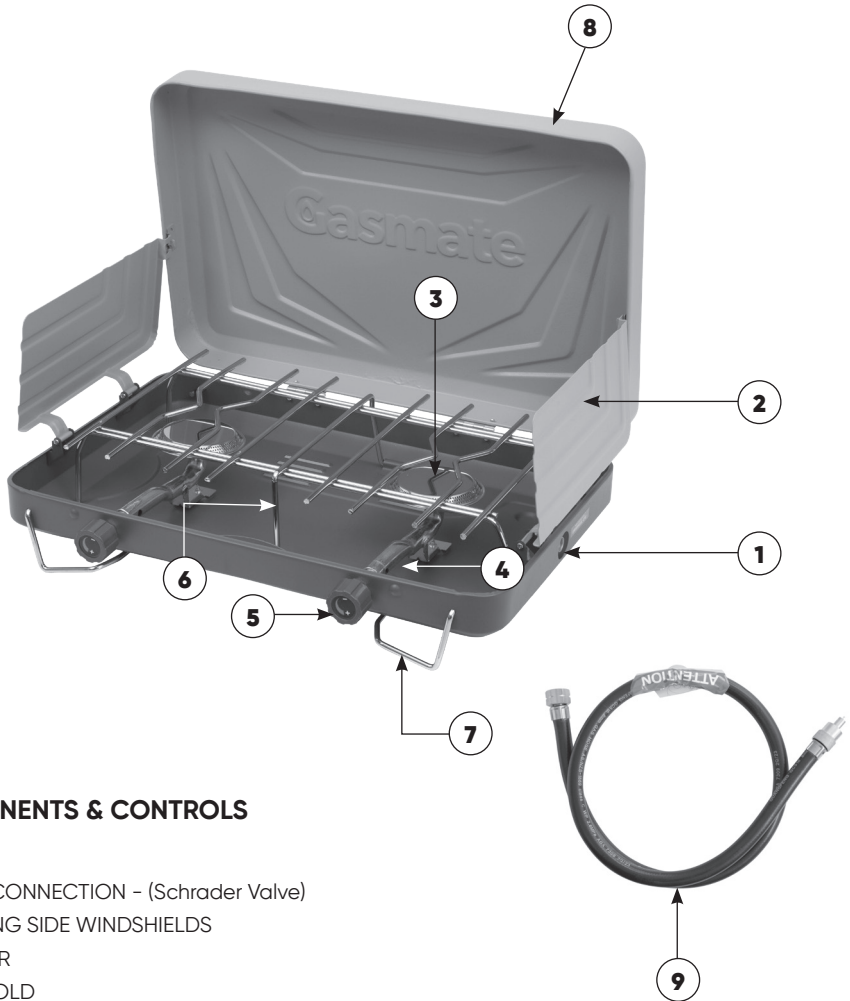
The appliance comes fully assembled, except for the installation of the gas hose and the purchase of an LP Gas Cylinder. Refer to the heading 'Specific Safety Warnings' for the recommended type of gas to use.

Note: LP GAS – Universal Liquefied Petroleum Gas camping cylinder is not included and must be purchased separately.

PACKAGING DISPOSAL

This packaging has been designed to be as kerbside recyclable as possible in Australia and New Zealand. Please follow recycling instructions on the box for all elements of your packaging.

UNDERSTANDING THE APPLIANCE



COMPONENTS & CONTROLS

PIC 1

1. INLET CONNECTION - (Schrader Valve)
2. FOLDING SIDE WINDSHIELDS
3. BURNER
4. MANIFOLD
5. CONTROL KNOB (OPEN/CLOSE - BURNER FLAME ADJUSTMENT)
6. COOKWARE TRIVET
7. FOLDING SUPPORT LEG
8. FOLDING LID / REAR WINDSHIELD
9. GAS HOSE (3/8"-19 BSPP-LH Thread to Schrader Valve Connection)

*Note: Components and controls are duplicated on the left side

OPERATING INSTRUCTIONS

HOW TO CONNECT THE APPLIANCE TO AN LP GAS CYLINDER

1. Refer to the headings 'General Safety Warnings' and 'Specific Safety Warnings'. Ensure they are read and fully understood before connecting the appliance to an LP Gas Cylinder.
2. Ensure that the LP Gas Cylinder is upright and positioned on a flat non-combustible surface.
3. Position the appliance on a flat non-combustible surface and rotate the Support Legs (7) downwards to unlock the Lid (8) and support the appliance while in use. Ensure adequate ventilation clearance is maintained underneath.
4. Open the Lid (8) to the vertical position, rotate the Windshields (2) and engage the clips with the slots in the side of the body to secure them.
5. Lift the front of the Cookware Trivet (6) and remove the Gas Hose (9) from its stored position, then replace the Cookware Trivet.
6. Check the O-Ring seals on the LP Gas Cylinder and appliance-end connections for any damage or foreign matter. Clean and/or replace if necessary.
7. Connect the Gas Hose (9) Schrader valve end to the appliance by pushing the hose fitting into the Inlet Connection (1), then hand-tighten the knurled nut until firm.
8. Connect the other end of the Gas Hose (9) (left-hand thread) to the LP Gas Cylinder 'output' valve and tighten with a spanner.

HOW TO TURN ON THE APPLIANCE

9. First check for gas leaks. Ensure that both Control Knobs (5) are 'OFF' for this test. DO NOT ATTEMPT TO LIGHT THE STOVE (Pic 2).
10. Rotate the LP Gas Cylinder Valve Knob counter clockwise approximately one full turn. Spray a soapy water mixture around the threaded connections at either end of the gas hose, the LP Gas Cylinder Valve and the appliance inlet connection (1). Observe

PIC 2
KNOB
MARKINGS



for any bubbles which would indicate a gas leak. If a gas leak is detected, turn the LP Gas Cylinder Valve Knob clockwise immediately to the OFF position and rectify the issue. Check the connections for tightness or replace the O-Ring seal.

11. If no leak is detected, the appliance is ready to use. Rotate the LP Gas Cylinder Valve Knob counter clockwise to allow gas to flow.
12. Each burner can be operated independently, and it is recommended to light one burner at a time if both are required. Rotate the Control Knob (5) counter clockwise approximately half a turn while simultaneously placing a lighted match or lighter in close proximity to the burner to ignite it. If the burner fails to light after several attempts, rotate the Control Knob (5) clockwise to the OFF position. Refer to the heading 'Troubleshooting' before attempting to light it again.
13. Regulate the flame intensity by rotating the Control Knob (5) either counter clockwise to increase, or clockwise to decrease, the flame height.

NOTE: If relighting is necessary while the appliance is in use and still hot, wait at least 5 minutes before attempting to relight. This allows any accumulated gas fumes to disperse.

If the burner does not light, check that the LP Gas Cylinder contains gas. If it is empty, replace it. If the burner still does not light, the jet may be blocked. Refer to the heading 'Maintenance, Cleaning, Care and Storage' on the next page.

IMPORTANT: Be very careful when turning the burner down. Visually check to ensure that the flame does not go out.

OPERATING INSTRUCTIONS (continued)

HOW TO TURN OFF THE APPLIANCE

14. Rotate either or both Control Knob/s (5) clockwise until they stop and the burner/s flame will extinguish.

IMPORTANT: When turning the appliance OFF after each use, the gas supply should be turned OFF at the LP Gas Cylinder first. This allows for the remaining gas within the hose to be burnt before closing the appliance Control Knob/s. Leaving residue gas within the hose can cause jet blockage.

Allow the appliance to cool down before touching the burners, trivet, windshields and before storage or transporting.

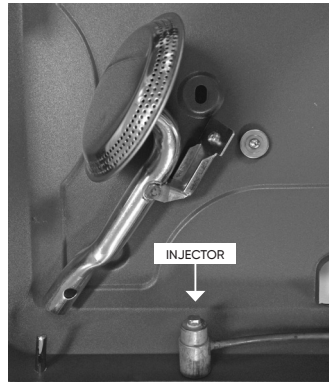
MAINTENANCE, CLEANING, CARE AND STORAGE

DO NOT DISASSEMBLE THE APPLIANCE

Cleaning or replacing the Jet:

If the jet should become blocked or of need replacement, follow these instructions:

- Remove the burner retaining screw located on the underside of the appliance. Carefully remove the burner to gain access to the jet. Carefully unscrew the jet to remove and inspect (Pic 3).
- To clear a blocked jet, wash in a mild detergent and or gently blow with compressed air, eye protection MUST be worn. Ensure not to use wire or sharp pointed objects.
- When refitting the jet, make sure the thread is clean and be careful not to cross or damage the thread before tightening. Reposition the burner, and the retaining screw. Ensure that all components are in place and secured before use.



PIC 3

Keep the appliance clean by wiping with a damp cloth. Avoid dust and other debris entering the burner orifice. Do not use cleaning products that are combustible, abrasive or corrosive.

The outside of the appliance can be wiped clean with a mild solution of dish washing detergent and finished off with a dry cloth. Do not use abrasive pads.

Recommended to clean the burner head by gentle scrubbing with a dry brush at least annually to ensure that the burner orifice (holes) are free of any obstructions.

Store the appliance in a cool, dry environment ensuring that the gas cylinder is removed and secured away from children.

If this appliance fails to operate correctly, it should not be used until it is serviced or repaired. Please contact our Customer Service Department using the contact details at the back of this User Manual.

SPARE PARTS

Knob	GMKN-2
Hose	GMH3
O-Ring (Spindle)	GMORN1
O-Ring (Cyl End)	GMORN6
O-Ring (Stove End)	GMORN4
Burner	85 1095HBNR
Jet	85 1095HJET

TROUBLESHOOTING

Problem Cause	No ignition	Unstable flame	Uneven flame	Slow burning	Gas smell	Stopped working while in use	Continued burning	Solution
Lack of fuel	●			●		●		Replace cylinder
Dirty burner	●	●	●	●				Clean burner
Thread not tight	●	●		●	●			Tighten thread
Empty cylinder	●		●	●				Replace cylinder
Faulty gas cylinder valve	●				●		●	Replace gas cylinder immediately

Due to continual development, specifications are subject to change without notice.

SPECIFICATIONS

TOTAL NOMINAL GAS CONSUMPTION:	22 MJ/h - 436 g/h
INJECTOR SIZE:	2 x 0.20 mm
GAS HOSE THREAD CONNECTIONS:	3/8" -19 BSPP-LH (Camping Cylinder) Schrader Valve

SAFE APPLIANCE LOCATION

CAUTION: ACCESSIBLE PARTS MAY BE VERY HOT. KEEP YOUNG CHILDREN AWAY. USE OUTDOORS ONLY

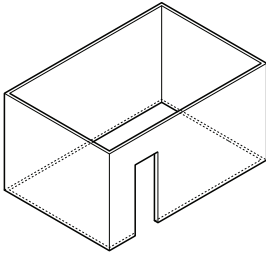
The appliance shall only be used in an above ground open air situation with natural ventilation, without stagnant areas, where gas leakage and products of combustion are rapidly dispersed by wind and natural convection.

Any enclosure in which the appliance is used shall comply with the following:

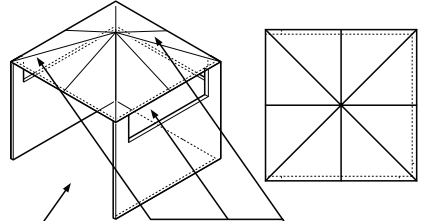
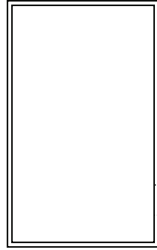
- A) An enclosure with walls on all sides, but with no overhead cover (see Example 1).
- B) Within a partial enclosure that includes an overhead cover and no more than two walls. (see Example 2 & 3).
- C) Within a partial enclosure that includes an overhead cover and more than two walls, the following will apply:
 - 1: At least 25% of the total wall area is completely open.
 - 2: 30% or more in total of the remaining wall side, back and front wall areas is open and unrestricted (see Example 4 & 5).
 - 3: In the case of balconies, 20% or more of the total wall area shall remain open and unrestricted.

DIAGRAMMATIC REPRESENTATIONS OF OUTDOOR AREAS

The following figures are diagrammatic representations of outdoor areas. Rectangular areas have been used in these figures – the same principles apply to any other shaped area.



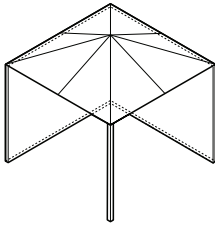
Outdoor Area - Example 1



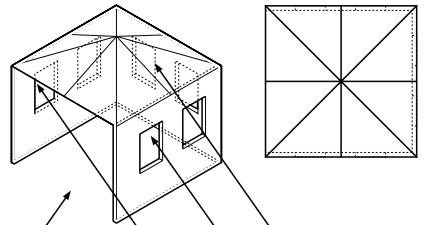
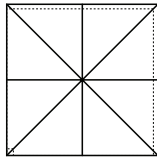
Open Side at least 25% of total wall area

30% or more in total of the remaining wall area is open and unrestricted

Outdoor Area - Example 4



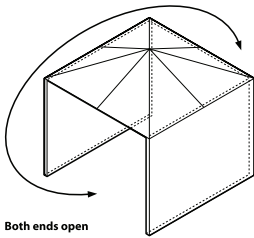
Outdoor Area - Example 2



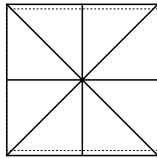
Open Side at least 25% of total wall area

30% or more in total of the remaining wall area is open and unrestricted

Outdoor Area - Example 5



Both ends open



FOR ANY QUERIES OR ASSISTANCE CONTACT:

AUSTRALIA

CUSTOMER SERVICE DEPARTMENT

Email: sales@sitro.com.au

Scan QR code for warranty and support details,
or visit gasmate.com.au/support



NEW ZEALAND

CUSTOMER SERVICE DEPARTMENT

Email: sales@aber.co.nz

Scan QR code for warranty and support details,
or visit gasmate.co.nz/warranty



Gasmate