



ELECTRIC PENDANT HEATER

Model No. EH714



- The ideal solution for extending the outdoor entertaining season
- Can be used indoors or outdoors
- Elegant black finish
- Stainless steel tube heating element
- 2400W Maximum output
- LED Light
- Bluetooth speaker
- Remote control
- Includes post and weighted base

Important: Retain these instructions for future use

INSTALLATION, OPERATION & MAINTENANCE INSTRUCTIONS

Safety

Before attempting to operate this heater, the following basic safety precautions should be taken to reduce the risk of fire, electric shock and personal injury. It is important to read the instruction manual and to understand its' applications, limitations and potential hazards associated with this heater. This heater is not intended for use by persons (including children) with reduced physical, sensory or mental capabilities, or lack of experience and knowledge, unless they have been given supervision or instruction concerning the use of the appliance by a person responsible for their safety. This heater is not designed for use within 1m or above a water source. It is important that you read, understand and follow these instructions very carefully. They are designed for the safety of yourself and others ensuring a long and trouble free service life from your heater. This electric heater complies with Australian and International standards and safety requirements. Repairs should only be carried out by qualified persons using original spare parts. Failure to do so may result in considerable danger to the operator.

SAFE OPERATION

Beware of Children and Pets

Children should not be allowed to touch or operate heaters or touch extension cords, if used. All heaters should be kept out of reach of children, preferably stored or locked in a secure cabinet or room when not in use.

Do Not Abuse or Damage the Power Cord

Never yank or pull on the power cord to disconnect it from the mains supply socket. Never carry your heater by its' power cord. Keep the power cord away from heat, oil, solvents and sharp edges. Check the power cord regularly for any damage. If the mains connection plug or power cord becomes damaged it must be replaced with a complete assembly that is identical to the original, and this must be replaced by the manufacturer or an authorised service centre or similar qualified persons in order to avoid a hazard.

Extension Cords and Reels

This heater is NOT designed to run off an extension cord. If you require an additional power point please have one installed by a qualified electrician.

The use of extension cords may cause power voltage loss which will result in damage to the motor this will NOT be covered under warranty.

Note: This heater is not equipped with a device to control the room temperature. DO NOT use this heater in small rooms when they are occupied by persons not capable of leaving the room on their own, unless under constant supervision.

Installation

Always ensure you select the correct fixing accessories which suit the particular material you are attaching to, if in doubt please discuss with your local retailer or local hardware store. This heater is not designed for use within 1m or above a water source. All installations must meet the requirements of Australia Standard AS/NZS 3000:2007.

Ensure that the heater is not positioned directly in front of a power point or directly above or below a power point or switch.

This heater is not designed to be used with 3rd party timer or programmable system.

WARNING: Fire risk exists if this heater is covered by or positioned close to curtains or other combustible materials.

NOTE: When using this heater outside ensure that it is connected directly to an outdoor power point.

The electrical system of this heater must be connected with an automatic 30mA circuit breaker and/or residual current device (RCD). If uncertain have a qualified electrician check your electrical system before installation and/or use.

All electrical connections are made in a dry area.

Outdoor power points must be weatherproof and installed by a qualified electrician.

When not in use ALWAYS store this heater in a safe, secure location which is not affected by wind, like a garage or similar fully enclosed area.

If this heater can not be stored as directed above it is highly recommended that the floor brackets be used and the heater be firmly secured to the floor. Always ensure that the correct fastenings are used for the type of floor the brackets are being attached to, if unsure discuss with your local hardware store.

Sitro Group Australia Pty Ltd is not responsible for incorrectly chosen fixing accessories or any damage which may be caused by an incorrectly fitted heater.

Position

Ensure this heater is positioned on solid, stable flat ground.

Please ensure adequate distance to walls, ceiling, eaves as noted;

- Minimum distance between top of heater and ceiling/eave – 300mm
- Minimum distance to a wall or pole, for rotating heater – 2000mm

This is to allow the heater head to rotate left and right

- Minimum distance to a combustible surface like a timber wall – 1000mm
- Minimum height of heater head to be 1800mm above the floor

SPECIFIC SAFETY INSTRUCTIONS

WARNING

Do not use the heater in areas where there is a risk of explosion or fire from flammable gases. Ensure that the heating area is kept clear of combustible materials. Do not use the heater in damp areas, without suitable ventilation. This heater is not designed for use within 1m or above a water source. Do not place within one metre (1m) of any water source. Do not place directly below or above any power points or switches.

WARNING: Fire risk exists if this heater is covered by or positioned close to curtains or other combustible materials.

- This heater is intended for domestic/household use only.
- Always ensure that this heater is installed as per the requirements noted in Australian Standard AS/NZS 3000:2007.
- Always keep heater at least one metre (1m) from combustible materials.
- DO NOT locate this heater directly below or above the power supply socket or switch.
- DO NOT use this heater in either a bathroom or ensuite.
- DO NOT use a 3rd party timer, or programmable system with this heater.
- DO NOT clean the heater while the heater is on or plugged into the mains power supply.
- DO NOT touch any part of the heater while on, hot surfaces may burn.
- DO NOT use the heater as a dryer.
- DO NOT attempt to modify the heater, power cord, power plug or the supplied accessories in any way.
- DO NOT expose the heater to rain, water, or use in damp wet conditions.
- NEVER cover this heater.
- NEVER carry the heater by its power supply cord.
- NEVER use with the power cord coiled, bundled up or tied up. Always extend fully before use.
- NEVER use the heater if any part of it is damaged.
- Ensure that the heater is disconnected from the mains supply when installing, cleaning or moving.
- Ensure this heater is not left on when unattended.
- Ensure the heater is not used in areas where flammable gases are present, e.g. paint, petrol etc.

- Always turn the heater OFF at the unit switch and the power point switch when not in use for extended periods of time.
- Always allow the heater to cool, about one (1) hour after the heater has been turned off, before cleaning the heater.
- Always ensure that the power cord is fully extended and NOT in contact with any part of the heater.
- Always ensure that the heater is kept clean and free from dust.
- Only use heater when fully assembled and with the SUPPLIED water or sand containers full.
- Only use heater when securely mounted to the supplied stand and the heater is fully assembled.
- DO NOT use within 1 metre of a swimming pool or spa.
- NEVER allow children 3 years to 8 years to switch this heater ON or play with remote control.
- NEVER allow children 3 years to 8 years to plug in, regulate heater, clean heater or perform maintenance on this heater.
- DO NOT use heater as a clothes drier or towel drier.
- Remove the remote control batteries when not using the heater for long time.
- Choose the same specification battery when replacing the remote control batteries, otherwise it may cause remote control not work, therefore affecting the normal use of the heater.
- The remote control function is line of sight and may not operate is something or someone is in the way of the signal.
- Replacing the batteries regularly is suggested to ensure the normal use and operation of heater and accessories.
- If the mains connection plug or power cord becomes damaged it must be replaced with a complete assembly that is identical to the original, and this must be replaced by the manufacturer or an authorised service centre or similar qualified persons in order to avoid a hazard.
- If heater is being left unattended when not in use, it is highly recommended the floor bracket be used and the heater be firmly secured to the floor. Always ensure the correct fastener is used for the type of floor the bracket is being attached to, if unsure discuss with your local hardware store.



This logo/symbol means DO NOT COVER.

WARNING - In order to avoid over heating, DO NOT COVER the heater.

ELECTRICAL DATA

IMPORTANT

This product is fitted with a sealed electrical connection plug that is compatible with the heater, the mains supply for Australia and meets the requirements of international standards. This heater must be connected to a supply voltage that is equal to that stated on the rating label. If the mains connection plug or power cord becomes damaged it must be replaced with a complete assembly that is identical to the original, and this must be replaced by the manufacturer or an authorised service centre or similar qualified persons in order to avoid a hazard. Always follow the Australian requirements for connection to the mains supply. If in doubt always consult a qualified electrician.

Technical Specification

Heater	EH714
Voltage	220-240V AC 50Hz
Input Wattage	2000-2400W
Unassembled unit weight	50Kg (inc. base)
Fully assembled unit weight	150Kg
IP Rating	IP 24
Lamp	TA: 20 - 25°C MAX 6W
Remote control batteries (not supplied)	2 x AAA

Heater specifications can be found on the data label.

COMPONENTS & ACCESSORIES

COMPONENTS

No.	Part Name
1	Heater Head
2	Closed End Nut M8
3	Spring Hook
4	Screws M8*50
5	Screws M8*55
6	Tube Cover
7	Cord Brushing
8	Upper Tube
9	Female Cord Connector
10	Tube Connector
11	Screws M6*12
12	Curled Tube
13	Upper Rotary Tube Connector
14	Middle Tube
15	Spring Washer
16	Base Cover
17	Screw M4*20

No.	Part Name
18	Heater Bracket Plate
19	Lower Tube
20	Base
21	Water Tank
22	Spring Washer
23	Male Cord Connector
24	Foot
25	Power Cord & Plug
26	Junction Board
27	Control Panel
28	Remote Control
29	Floor Bracket Mount
30	Floor Bracket
31	Floor Bracket Concrete Expansion Bolt
32	Heater Steel Plate
33	Screw knob

ACCESSORIES

Accessory Name	Qty
Spring Hook	1
Screws M6*12	10
Water Tank	4
Spring Washer M6	4
Foot	4
Remote Control	1
Floor Bracket Mount	1
Floor Bracket	1
Floor Bracket Concrete Expansion Bolt	1

ASSEMBLY INSTRUCTIONS

Note: Remove all transit packaging and protection material before starting to assemble. Dispose of in an environmentally friendly way.

Note: In order not to damage or scratch parts/components it is recommended that a blanket is placed on the ground before unpacking this heater. Given the size and weight of this heater it is recommended that 2 people are required for assembly.

Note: Only tool required is a "Phillips" cross head screw driver.

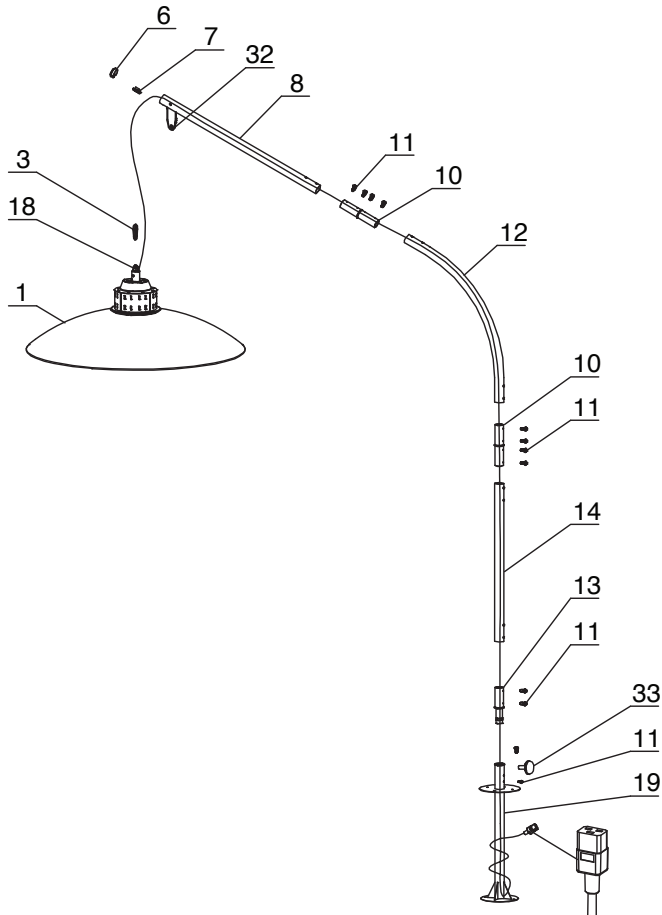
Heater Head and Stand, FIG A

To avoid scratching lay parts/components on a blanket for assembly.

1. Hook the Carbineer (#3) onto both the top of the Heater Bracket Plate (#18) & Heater Steel Plate (#32).
2. Put Cord Bushing (#7) & Tube Cover (#6) onto the open end of the Upper Tube (#8).

3. Pull the excess power cord between the Heater Head (#1) & Upper Tube (#8) into the other tubes. Do not make too tight, have enough excess cord to be able to put your fingers between the excess cord and the spring extension (#3) this will ensure that the Heater Head (#1) is free to move when you stand it up.
4. Secure power cord into clamp on Heater Steel Plate (#32).
5. Fix the Curved Tube (#12) to the Upper Tube assembly, using the Tube Connector (#10) & Screws M6*12 (#11).
6. Fix the Middle Tube (#14) to the Curved Tube assembly, using the Tube Connector (#10) & Screws M6*12 (#11).
7. Fix the Lower Tube (#19) to the Middle Tube assembly using the Upper Rotary Tube Connector (#13) & Screws M6*12 (#11) & Screw Knob M6*16 (#18).

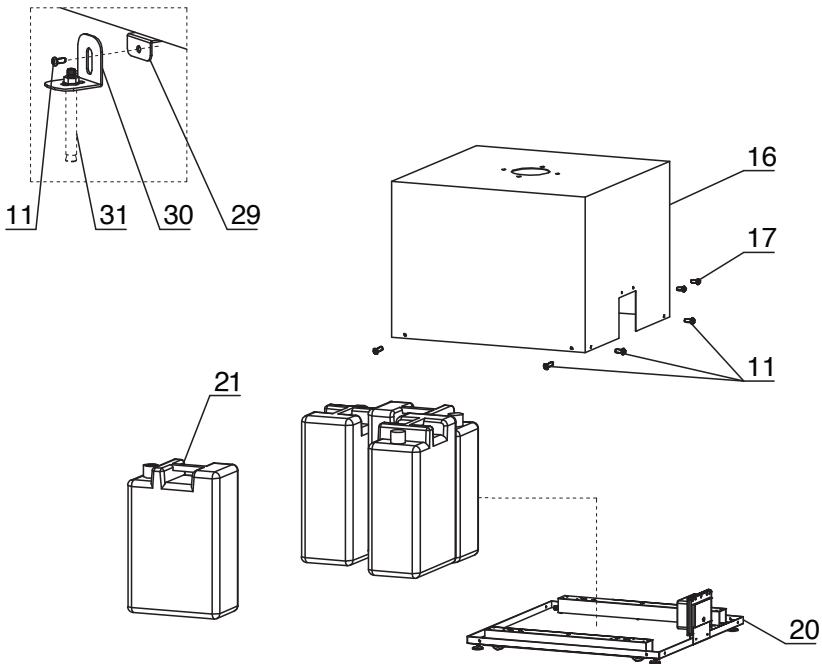
FIG A



Heater Base, FIG B

1. Unscrew all of the 8 Screws M6*12 (#11) and the 2 Screws M4*20 (#17) which attach the Base Cover (#16) to the Base (#20) and remove the Base Cover (#16).
2. Screw the floor bracket (#30) to the floor bracket mount (#29) which is located on the side of base (#20) using screw M6*12 (#11).
3. Remove all 4 of the empty Water Tanks (#21), fill them full with water for use later.

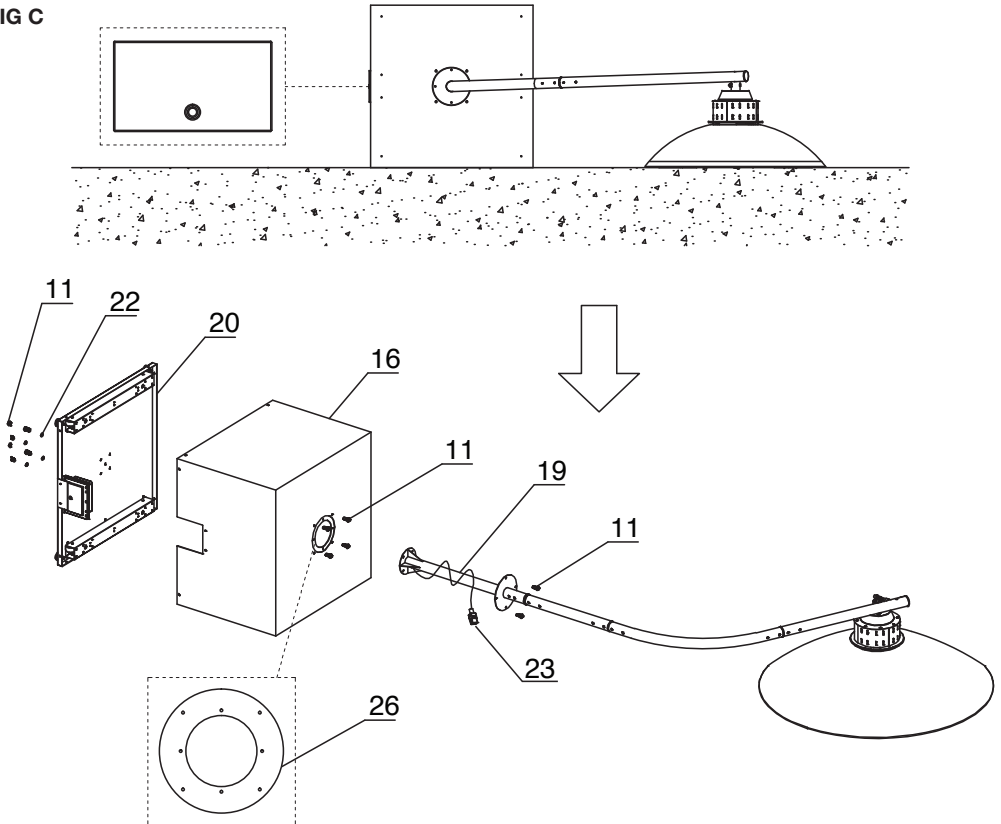
FIG B



Heater Base, FIG C

3. Lay the Base Cover (#16) on its side with the cut out visible and to the left.
4. Slide the power cord and assembled tubes (#19), through the Base Cover (#16) carefully. Make sure the power cord and Male Cord Connector (#23) are not damaged when getting through the hole on the Base Cover (#16). Fix the Lower Tube (#19) onto the Junction Board (#26), which is pre-installed on the top of the Base Cover (#16) with 4 Screws M6*12 (#11).
5. Detach the Junction Board (#26) from the Base Cover (#16) by unscrewing and removing the 4 Screws M6*12 (#11), now slide the Base Cover up the assembled poles so that you can access the bottom bracket on the Lower Tube (#19). Use caution when sliding the base cover, as you do not want to scratch the assembled poles, suggest 1 person lift the assembled poles slightly while the other person slides the base cover.
6. Screw the Lower Tube (#19) onto the Base (#20) using 4 Screws M6*12 (#11) and Spring Washers M6 (#22).
7. Carefully slide the base cover down so that it is at the base, do not trap the power cord or connector.

FIG C



Heater Base, FIG D

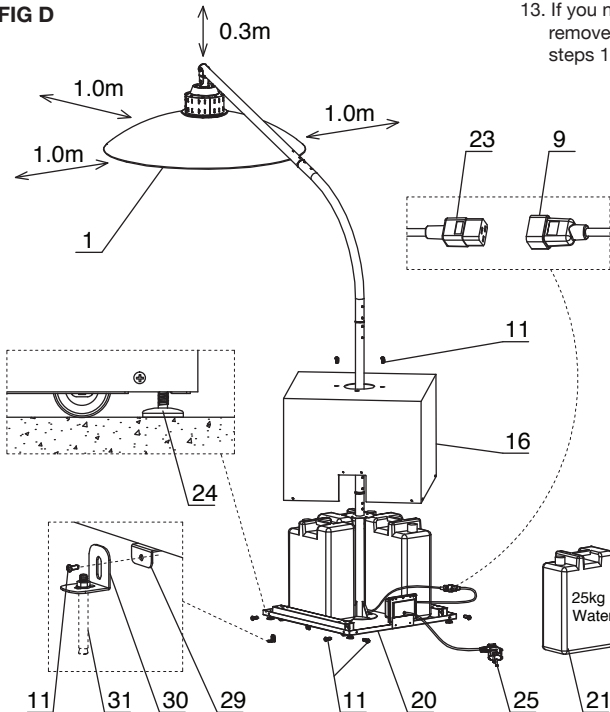
- Carefully stand the heater up. 1 person will need to support the heater. Lift the Base Cover (#16) up and place the 4 FULL Water Tanks (#21) into the base.
- Rest the Base Cover (#16) on top of the 4 FULL water tanks.
- Connect the Male and Female Power Cord Connectors (#23 & #9) securely.
- Position the Power Cord and Connectors so that they will not get caught when the base cover is in position.
- Position the Base Cover (#16) onto the Base (#21) correctly and secure together by re-screwing the 8 Screws M6*12 (#11) and the 2 Screws M4*20 (#17) which were removed at step 1, FIG B.
- Secure the Base Cover (#16) onto the Junction Board (#26) with 4 Screws M6*12 (#11).
- At this point the heater will support itself and the person supporting the heater can let go.
- There are 4 wheels under the base, with which the heater could be moved freely, these do not swivel.

- There are 4 Screw Feet (#24) at each corners under the Base (#20) to make the heater more stable.
 - To adjust the screw feet unscrew, anti-clockwise until firm against the ground, making sure you do all 4 screw feet.
 - To move the heater all 4 screw feet will need to be screwed in, clockwise.
 - Once heater has been re-located ensure that you unscrew all 4 screw feet, anti-clockwise until firm against the ground.

NOTE: If the heater is being left unattended when not in use, it is highly recommended that the floor bracket (#30) be used and the heater be firmly secured to the floor. Always ensure the correct fastener (#31) is used for the type of floor the bracket is being attached to, if unsure discuss with your local hardware store. Only use heater when fully assembled and with the SUPPLIED water or sand containers full.

- Position the heater as per steps 8 and 9. Once the correct position is found, mark the floor through the hole in floor bracket (#30).
- Drill hole suitable for the selected fastener (#31).
- Screw the selected fastener (#31) through the floor bracket and into the floor, tighten firmly.
- If you need to reposition the heater loosen and remove the fastener (#31), move heater then repeat steps 10 through 12.

FIG D



Heater Positioning

NOTE: If heater is being left unattended when not in use, it is highly recommended the floor bracket be used and the heater be firmly secured to the floor. Always ensure the correct fastener is used for the type of floor the bracket is being attached to, if unsure discuss with your local hardware store, refer to page 8 for details of securing.

1. Only use heater on flat, level, solid ground.
2. Position heater at least 300mm from the eave lining or ceiling.
3. Only use heater on the stand provided.
4. Only use heater when fully assembled and with the SUPPLIED water or sand containers full.
5. Never position in front, above or below a power point.
6. If heater is facing another vertical surface, example – wall, the gap must be at least 1 metre.
7. Never mount heater within 1 metre of a water source, example – tap, pool, spa or water feature.
8. Never mount heater into the wall or ceiling. Only mount to the stand provided.

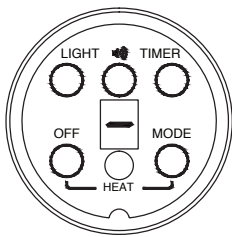
Controls, Built In & Remote

Once the heater has been turned on at the heater head, this heater can then be operated either by the provided remote control or by the built in controls in the heater head. The operating controls, Remote/Built in, are the same.

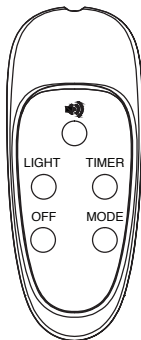
To use the remote control;

- Slide back off the remote control
- Insert 2 x “AAA” batteries (Not Supplied)
- Slide the back into position.

FIG E



27




28

Using Heater, FIG E


Position heater and ensure that the screw feet are against the ground and that the heater is stable.

1. Plug into 240V AC wall socket and turn ON.

Note: All outdoor power points must be installed by a qualified electrician and should be of a waterproof style.
2. Press Main Switch “-” on the heater head, the digital display will start flashing showing that the heater is on standby.
 - a. The heater can now either be operated with the remote control or the built in heater controls.
3. Heater Controls
 - a. Press “Mode” button to turn heater on. By pressing the “Mode” button again you will change the heater setting.
 - i. This will cycle through each heat setting continually with each press of the “Mode” button.
 - ii. The selected setting will display on the built in display on the heater head
 - b. Press “Timer” button to choose the length of time the heater will operate before turning off.
 - i. The timer can be set between 0-9 hours.
1. “0” means the timer is off.
 - c. The digits of the power settings and timer will be displayed as cycled: power settings for ten seconds, timer flashing for five seconds.
4. Press  button to switch on/off the Bluetooth speaker.
5. Press “Light” button to switch on/off the LED light.
6. To shift the heater to standby mode, press OFF button. The display will start flashing “-” .
7. To switch off the heater, press Main Switch on the heater head accordingly.

Bluetooth Pairing

To pair heater speaker with your Bluetooth compatible music player/phone;

1. Press and hold  button until you hear a chime sound
2. Search for “HH-LY01” on your device.
3. Select and follow the prompts for pairing.

Rotating Heater Head, FIG F

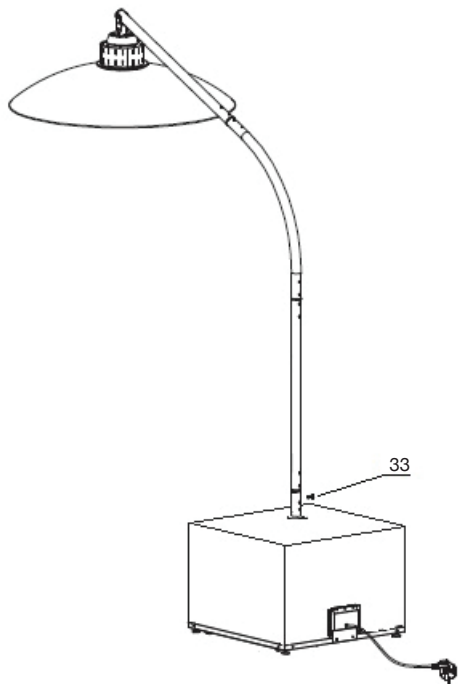
NOTE: Ensure you have a minimum of 2m clearance to rotate the head otherwise the heater head will hit the obstacle.

Warning: Always have the heater turned OFF before rotating the heater head.

To rotate the heater head;

1. Loosen the screw knob (#33), do not remove.
2. Slowly and gently move the top part of the stand and heater head left or right.
3. Once new position is correct tighten the screw knob (#33).

FIG F



Cleaning

Always ensure that the heater has been left for one (1) hour to cool before cleaning.

1. Turn off and disconnect from mains power, allow to cool.
2. Wipe unit over with a damp clean soft lint free cloth.
3. For stubborn marks you can use a mild dish washing solution on a damp clean soft lint free cloth.

NEVER allow water or a mild dish washing solution to enter or drip onto the heater.

NEVER use solvents, e.g. Petrol, Toluene, Methylated Spirits etc to clean the heater, as these will damage the surface finish and may cause a fire when unit is next used.

Replacing Parts

If replacement parts are required, including light, bluetooth speaker or digital display, please contact Customer Service for your closest Service Agent.

There are no user serviceable parts. All servicing and replacement parts must be installed by a service agent or qualified person to avoid electrical hazards.

WARRANTY STATEMENT

GASMATE BARBEQUES & ACCESSORIES PRODUCT RANGE

SITRO GROUP AUSTRALIA (S.G.A.) warrants the purchaser of this product against defects in workmanship and materials for the following periods from the date of purchase:

For domestic use this table applies:

Stainless steel components	5 years (surface oxidization excluded)
Enamel components	5 years (chips excluded)
Powder coated components	1 year
Burners	3 years (surface rust excluded)
Cast iron cooking plates and burners	3 years (surface rust excluded)
Valves	3 years
Ignition	1 year
All other items	1 year

This warranty is not transferable to a subsequent purchaser if the product is sold by the original purchaser during the warranty period.

If a warranty fault appears within the warranty period, S.G.A. reserves the right to replace or repair the product.

In the event that S.G.A. chooses to replace the product, this original warranty will expire at the original date.

If the product includes various accessories or components, only the defective accessory or component will be replaced or repaired.

S.G.A. reserves the right to replace defective parts of the product with parts and components of similar quality, grade and composition where an identical part or component is not available.

Products presented for repair may be replaced by refurbished products of the same type rather than being repaired. Refurbished parts may be used to repair the products.

To make a warranty claim, first contact S.G.A.'s Customer Service Line on the contact number below.

The purchase receipt for this product is to be retained and must be presented if making claim under the terms of this S.G.A. warranty.

Warranty repairs are free of charge, provided the product is delivered to our Service Department at 33-35 Lionel Road, Mt Waverley, Victoria, 3149 or to one of our Authorised Service Agents.

If a warranty fault is found the freight cost will be credited to the owner.

If no fault is found the product will be returned and any costs associated with the service will be charged to the owner.

Products sent freight forward will not be accepted. In most cases the defective accessory or component only will need to be returned. The product or part of the product being returned must be adequately protected in a box.

S.G.A. will not be responsible for any in-transit loss or damage.

This warranty does not apply to any defect, deterioration, loss, injury or damage occasioned by or as a result of misuse or abuse, negligent handling or storage, normal wear and tear or if the product has not been installed and used in accordance with S.G.A.'s instructions, recommendations and specifications or if the product has been subjected to abnormal conditions. The warranty does not apply to blockages caused by insects or living organisms.

The warranty is void if there is evidence of the product being tampered with by unauthorised persons.

The warranty does not extend to installation or disconnection costs.

Our goods come with guarantees that cannot be excluded under the Australian Consumer Law. You are entitled to a replacement or refund for a major failure and for compensation for any other reasonably foreseeable loss or damage. You are also entitled to have the goods repaired or replaced if the goods fail to be of acceptable quality and the failure does not amount to a major failure. The benefits of this warranty are in addition to any rights and remedies imposed by Australian State and Federal legislation that cannot be excluded.

For warranty claims, service, spare parts or products information in Australia, please call SITRO GROUP AUSTRALIA Pty Ltd on the Customer Service Line 1300 174 876.

Register your Warranty online at
www.gasmate.com.au

A receipt or proof of purchase is required and must be kept for your records. Note: If you do not have internet access call our customer service team on 1300 174 876

CONTACT DETAILS

Sitro Group Australia Pty Ltd
33-35 Lionel Road, Mt. Waverley
Victoria 3149, Australia.
Tel (+613) 9543 9533
Fax (+613) 9543 9839
sales@sitro.com.au

For any queries or assistance call



Customer Service
(Australia Only)

1300 174 876

Hours of operation:
Monday to Friday 8am - 5pm EST

Do not return to place of purchase.
Keep your purchase receipt, this will be required to
make any claims under the 12 month warranty.

Gasmate®