

**Gasmate**  
the outdoors made easy

# ODYSSEY BBQ RANGE



♻️ INTRODUCING THE STYLISH AND COMPACT ODYSSEY BBQ SERIES. THIS RANGE WILL REVOLUTIONISE THE WAY YOU THINK ABOUT BBQS, OFFERING A BIGGER AND BETTER BBQ THAT EVERYONE WILL LOVE COOKING ON. BE THE ENVY OF ALL YOUR FRIENDS WHEN YOU WHIP UP A GOURMET MEAL ON THE ODYSSEY. PERFECT AT HOME AND ON THE GO, THERE IS AN ODYSSEY MODEL TO SUIT EVERY SITUATION.



GAS CERTIFIED TO  
AUSTRALIAN AND  
NEW ZEALAND  
STANDARDS



Available at  
**BUNNINGS**  
warehouse



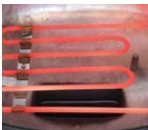
AVAILABLE IN BLACK AND RED

## ODYSSEYELECTRIC2200W

I/N 3180881  
MODEL NO.  
BQ1065

I/N 3180880  
MODEL NO.  
BQ1065R

- ▣ 1 x Powerful 2200w stainless steel electric cooking element
- ▣ Generous cooking area of 1419cm<sup>2</sup>
- ▣ Satin enamel cast iron cooking surface grill surface is easy to cook on and wash up
- ▣ 20cm high dome hood - allows you to roast easily
- ▣ Integrated temperature gauge - a must when roasting
- ▣ Double die cast aluminium bowl and hood
- ▣ Rotary dial for easy temperature control
- ▣ Convenient side shelves for easier food preparation and cooking - when not in use, they can be removed
- ▣ Convenient 2 metre long power cord





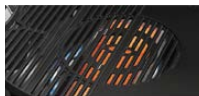
AVAILABLE IN BLACK AND RED

## ODYSSEY3TSEARZONE™

I/N 3180879  
MODEL NO.  
BQ10642

I/N 3180878  
MODEL NO.  
BQ10642R

- ▣ 3 Burners - 36MJ/h heat output
- ▣ 2 x Powerful 11MJ/h stainless steel burners with 14MJ/h Sear Burner for powerful BBQ performance
- ▣ Searzone™ is an ultra-heated ceramic element with high intensity infrared heat
- ▣ Generous cooking area of 2900cm<sup>2</sup>
- ▣ Satin enamel cast iron cooking surface - ½ grill and ½ hotplate - easy to cook on and wash up
- ▣ 24cm high dome hood - allows you to roast easily
- ▣ Integrated temperature gauge - a must when roasting
- ▣ Removable grill circular section for wok cooking
- ▣ Double die cast high dome aluminium bowl and hood
- ▣ Rotary piezo ignition for effortless lighting
- ▣ Convenient side shelves for easier food preparation and cooking - when not in use, they can be removed
- ▣ Supplied with hose and regulator
- ▣ Trolley features integrated wheels, BBQ tool hooks and screen to discreetly hide gas cylinder and storage area
- ▣ Gas Certified to Australian Standards







AVAILABLE IN BLACK AND RED

## ODYSSEY1

I/N 3180801  
MODEL NO.  
BQ1060

I/N 3171297  
MODEL NO.  
BQ1060R

- 1 Burner - Powerful 11MJ/h stainless steel burner for true BBQ performance
- Generous cooking area of 1419cm<sup>2</sup>
- Satin enamel cast iron cooking surface - ½ grill and ½ hotplate - easy to cook on and wash up
- 20cm high dome hood - allows you to roast easily
- Integrated temperature gauge - a must when roasting
- Double die cast aluminium bowl and hood
- Rotary piezo ignition for easy lighting
- Convenient side shelves for easier food preparation and cooking - when not in use, they can be removed
- Supplied with hose and regulator
- Gas Certified to Australian Standards



STAND & TROLLEY AVAILABLE AS AN OPTIONAL EXTRA (STAND & TROLLEY SOLD SEPARATELY)





UNIVERSAL LPG GAS CERTIFIED TO AUSTRALIAN STANDARDS

AVAILABLE IN BLACK AND RED

## ODYSSEY2

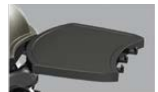
I/N 3180802  
MODEL NO.  
BQ10612

I/N 3171299  
MODEL NO.  
BQ10612R

- 2 Burner - Powerful 23MJ/h stainless steel burner for true BBQ performance
- Generous cooking area of 2130cm<sup>2</sup>
- Satin enamel cast iron cooking surface -  $\frac{2}{3}$  grill and  $\frac{1}{3}$  hotplate - easy to cook on and wash up
- 21cm high dome hood - allows you to roast easily
- Integrated temperature gauge - a must when roasting
- Double die cast aluminium bowl and hood
- Rotary piezo ignition for easy lighting
- Convenient side shelves for easier food preparation and cooking - when not in use, they can be removed
- Supplied with hose and regulator
- Gas Certified to Australian Standards



TROLLEY AVAILABLE AS AN OPTIONAL EXTRA (TROLLEY SOLD SEPARATELY)



# Gasmate

the outdoors made easy



AVAILABLE IN BLACK AND RED

## ODYSSEY2T

I/N 3180806  
MODEL NO.  
BQ10622

I/N 3171300  
MODEL NO.  
BQ10622R

- ▣ 2 Burners - Powerful 23MJ/h stainless steel burners for true BBQ performance
- ▣ Generous cooking area of 2130cm<sup>2</sup>
- ▣ Satin enamel cast iron cooking surface - <sup>2</sup>/<sub>3</sub> grill and <sup>1</sup>/<sub>3</sub> hotplate - easy to cook on and wash up
- ▣ 21cm high dome hood - allows you to roast easily
- ▣ Integrated temperature gauge - a must when roasting
- ▣ Removable grill circular section for wok cooking
- ▣ Double die cast high dome aluminium bowl and hood
- ▣ Rotary piezo ignition for effortless lighting
- ▣ Convenient side shelves for easier food preparation and cooking - when not in use, they can be dropped down
- ▣ Supplied with hose and regulator
- ▣ Trolley features integrated wheels, BBQ tool hooks and screen to discreetly hide gas cylinder and storage area
- ▣ Gas Certified to Australian Standards







UNIVERSAL LPG GAS CERTIFIED TO AUSTRALIAN STANDARDS

AVAILABLE IN BLACK AND RED

## ODYSSEY3T

I/N 3180803  
MODEL NO.  
BQ10632

I/N 3171301  
MODEL NO.  
BQ10632R

- ▣ 3 Burners - Powerful 27.5MJ/h stainless steel burners for true BBQ performance
- ▣ Generous cooking area of 2900cm<sup>2</sup>
- ▣ Satin enamel cast iron cooking surface - ½ grill and ½ hotplate - easy to cook on and wash up
- ▣ 24cm high dome hood - allows you to roast easily
- ▣ Integrated temperature gauge - a must when roasting
- ▣ Removable grill circular section for wok cooking
- ▣ Double die cast high dome aluminium bowl and hood
- ▣ Rotary piezo ignition for effortless lighting
- ▣ Convenient side shelves for easier food preparation and cooking - when not in use, they can be dropped down
- ▣ Supplied with hose and regulator
- ▣ Trolley features integrated wheels, BBQ tool hooks and screen to discreetly hide gas cylinder and storage area
- ▣ Gas Certified to Australian Standards





## ODYSSEY STAND

I/N 3180804  
MODEL NO.  
BA1036

- Stand for Gasmate Odyssey 1 Portable BBQ
- Sturdy aluminium frame
- Lightweight and portable
- Collapsible for easy storage and transport
- Convenient wheels

## ODYSSEY TROLLEY

I/N 3180807  
MODEL NO.  
BA1037

- Trolley for Gasmate Odyssey 1 and 2 Portable BBQ
- Sturdy lightweight frame made from powder coated steel
- Screen discreetly hides gas cylinder and large storage area
- Gas cylinder locating cut-out
- Integrated BBQ tool hooks
- Convenient wheels



KEEP UP TO DATE WITH TIPS,  
PROMOTIONS AND NEWS!  
LIKE US ON FACEBOOK....

[www.facebook.com/GasmateAustralia](http://www.facebook.com/GasmateAustralia)  
[www.instagram.com/Gasmate](http://www.instagram.com/Gasmate)  
[www.gasmate.com.au](http://www.gasmate.com.au)

Due to continual product development, the product you purchase may differ slightly from the ones shown here. Gasmate® is a registered trademark of Sitro Group Australia Pty. Ltd. [www.gasmate.com.au](http://www.gasmate.com.au) and Aber, N.Z. [www.gasmate.co.nz](http://www.gasmate.co.nz)

03589 05/17

# ODYSSEY BBQ RANGE

Available at  
**BUNNINGS**  
warehouse

*The Outdoors Made Easy*